



ST MARYS COLLEGE
**UNIFORM
BROCHURE**

ST MARYS COLLEGE

SUMMER UNIFORM

TO BE WORN DURING TERM 1 & 4



CHECKLIST:

- COLLEGE BLAZER
- SUMMER SHIRT
- SUMMER DRESS
- SHORTS
- SHORT COLLEGE BLACK SOCKS
- BLACK LEATHER SCHOOL SHOES
- COLLEGE JUMPER AND VEST
- COLLEGE BAG

SCHOOL SHOES MUST BE PLAIN BLACK, POLISHED LEATHER, HARD-SOLED SHOES (NO RUNNERS, NO BRANDS).

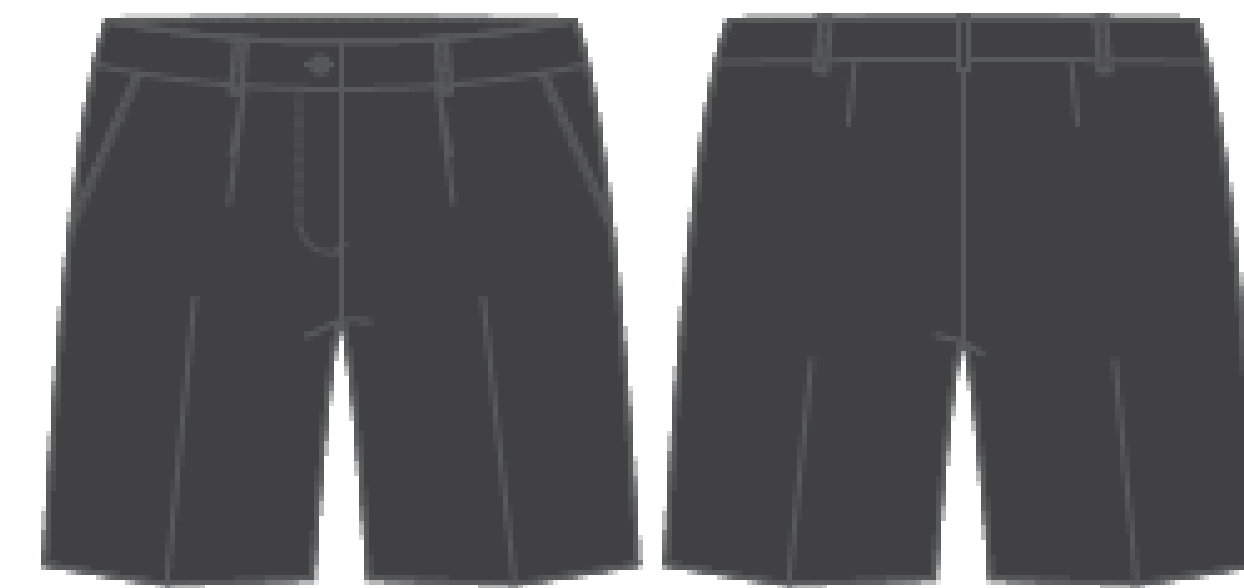
UNIFORM:



SUMMER DRESS



COLLEGE SHIRT
(FEMALE CUT)



COLLEGE SHORTS
(FEMALE CUT)



COLLEGE VEST



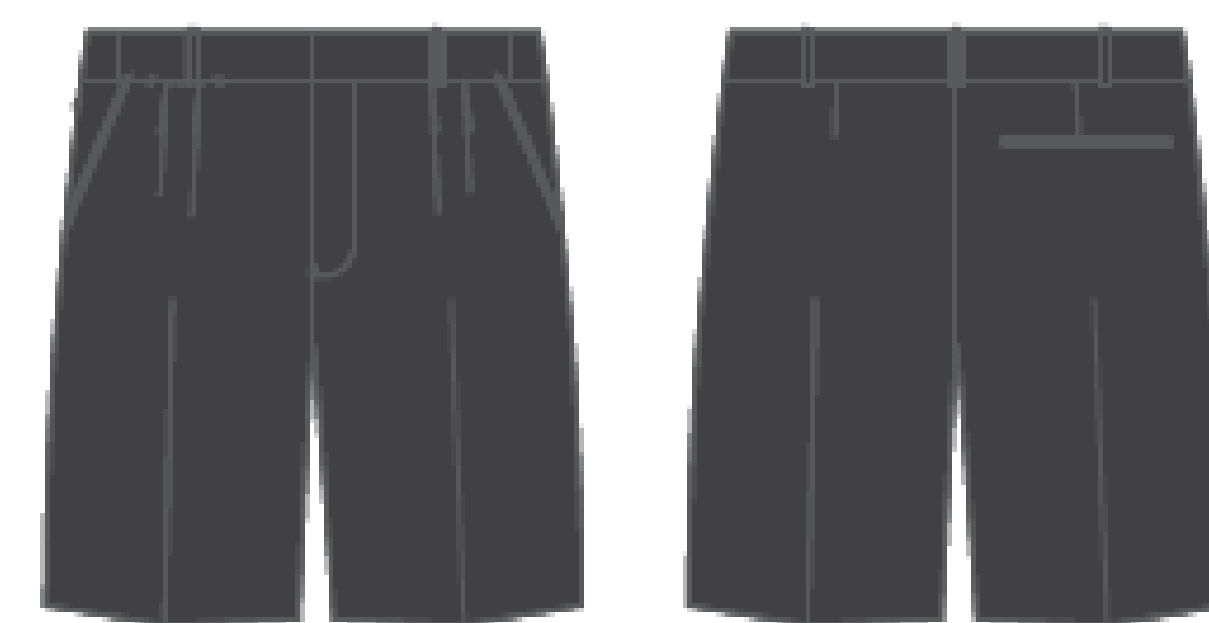
COLLEGE JUMPER



BLACK SOCKS



COLLEGE SHIRT
(MALE CUT)



COLLEGE SHORTS
(MALE CUT)



COLLEGE BAG



COLLEGE BLAZER

ST MARYS COLLEGE

WINTER UNIFORM

TO BE WORN DURING TERM 2 & 3

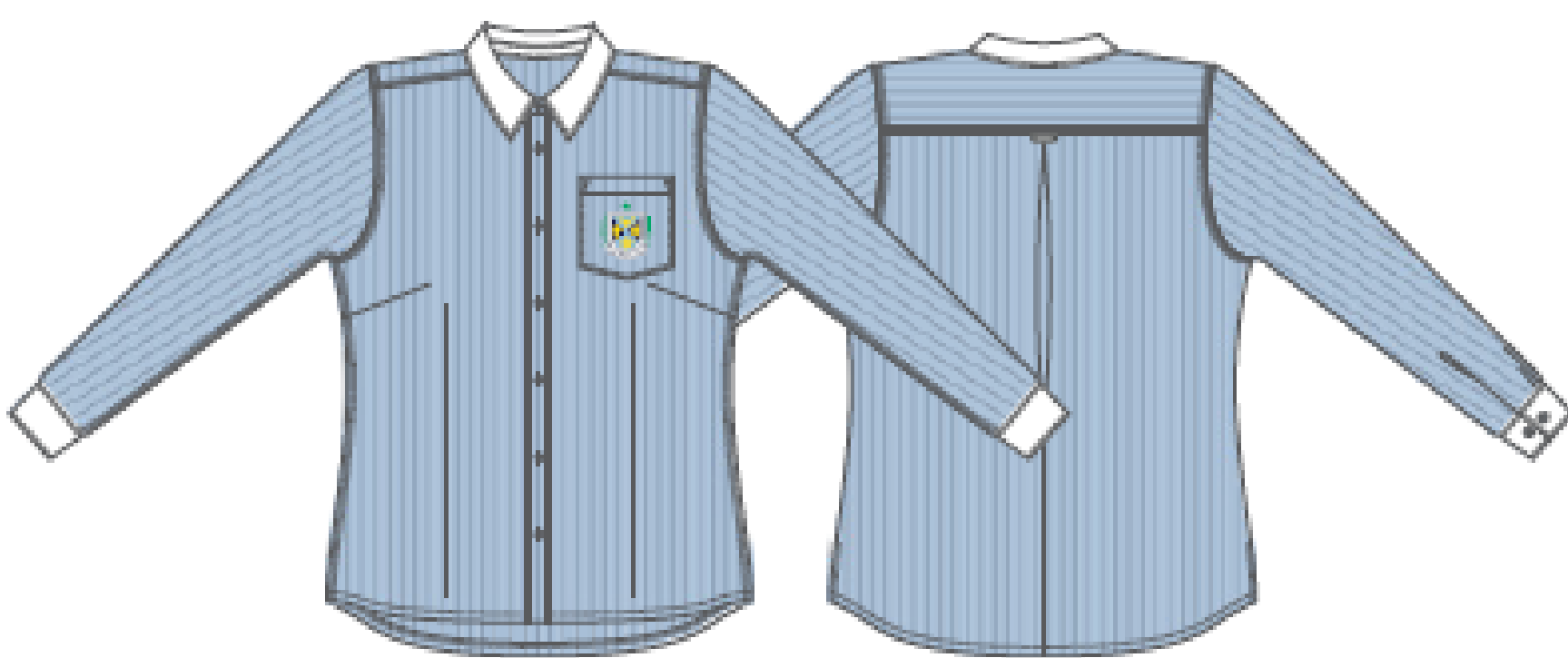


CHECKLIST:

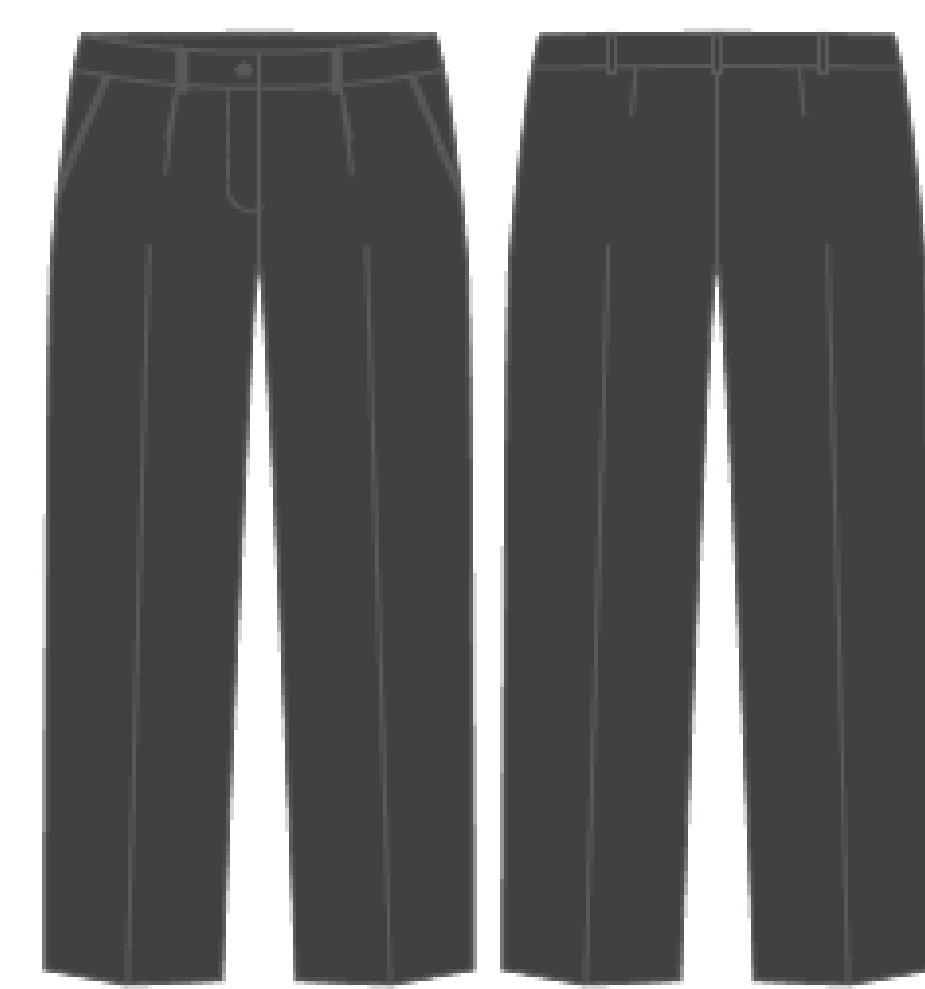
- COLLEGE BLAZER
- WINTER LONG-SLEEVED SHIRT
- COLLEGE TIE
- WINTER SKIRT WITH OPAQUE TIGHTS
- SHORT COLLEGE BLACK SOCKS
- BLACK LEATHER SCHOOL SHOES
- COLLEGE JUMPER AND VEST
- COLLEGE SHORTS
- COLLEGE BAG

SCHOOL SHOES MUST BE PLAIN BLACK, POLISHED LEATHER, HARD-SOLED SHOES (NO RUNNERS, NO BRANDS).

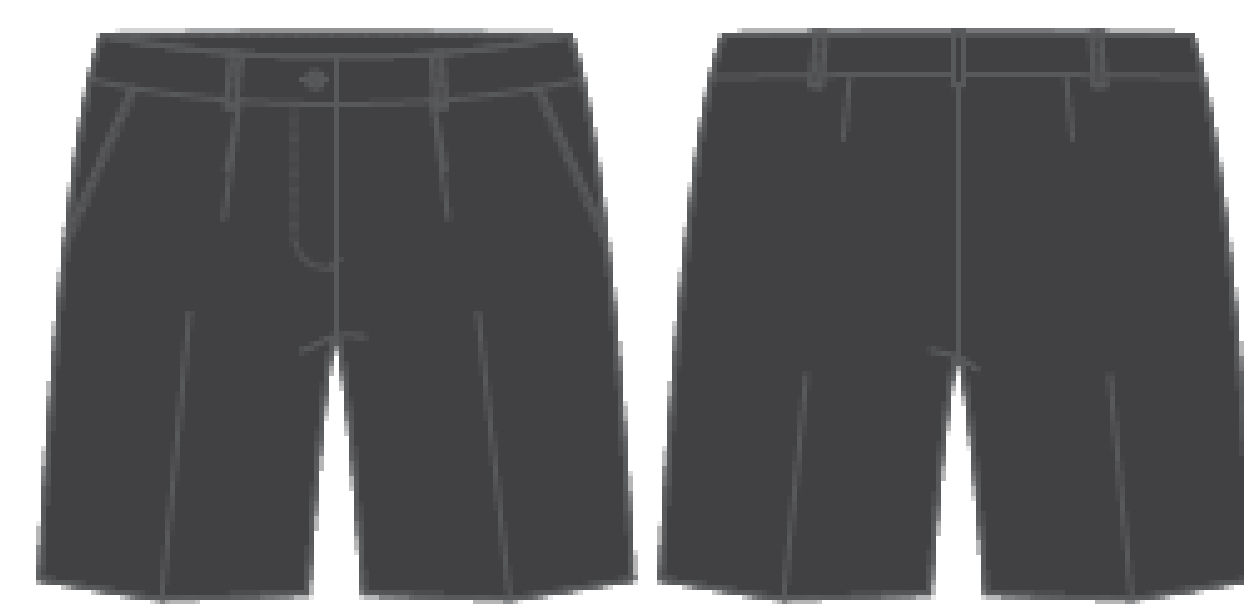
UNIFORM:



LONG SLEEVE SHIRT
(FEMALE CUT)



PANTS
(FEMALE CUT)



COLLEGE SHORTS
(FEMALE CUT)



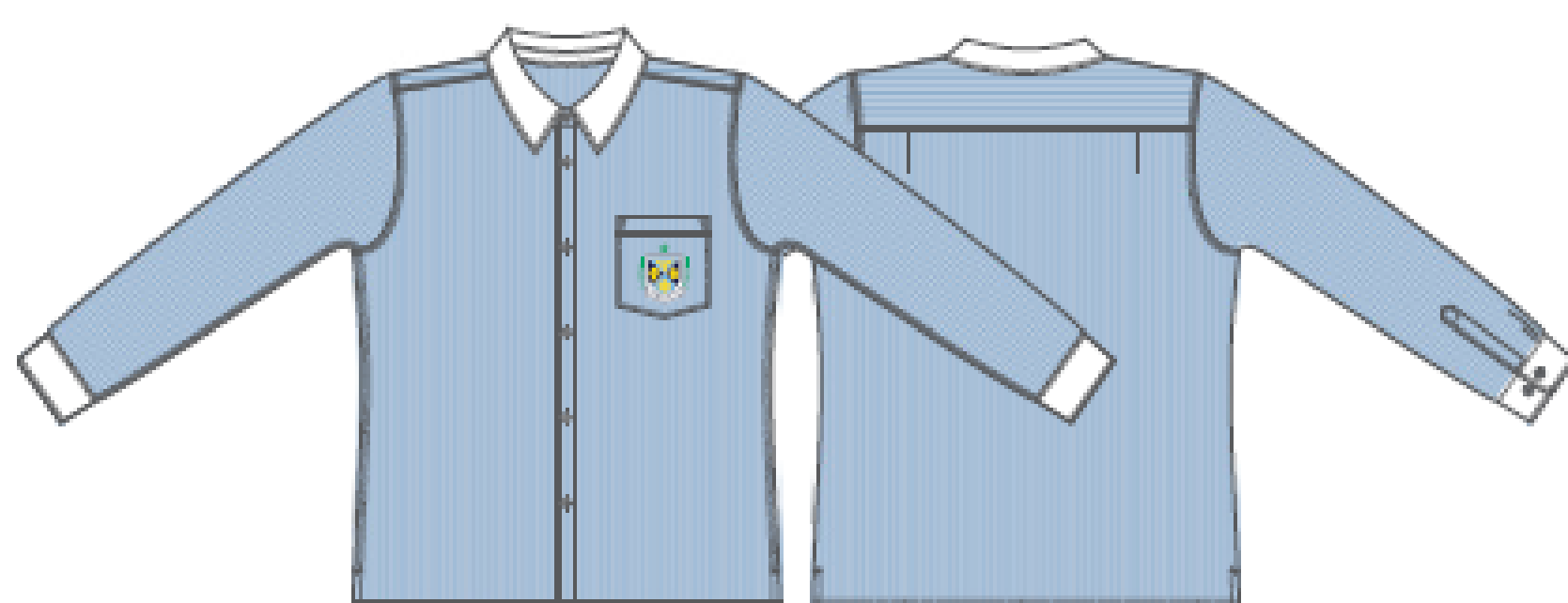
SKIRT



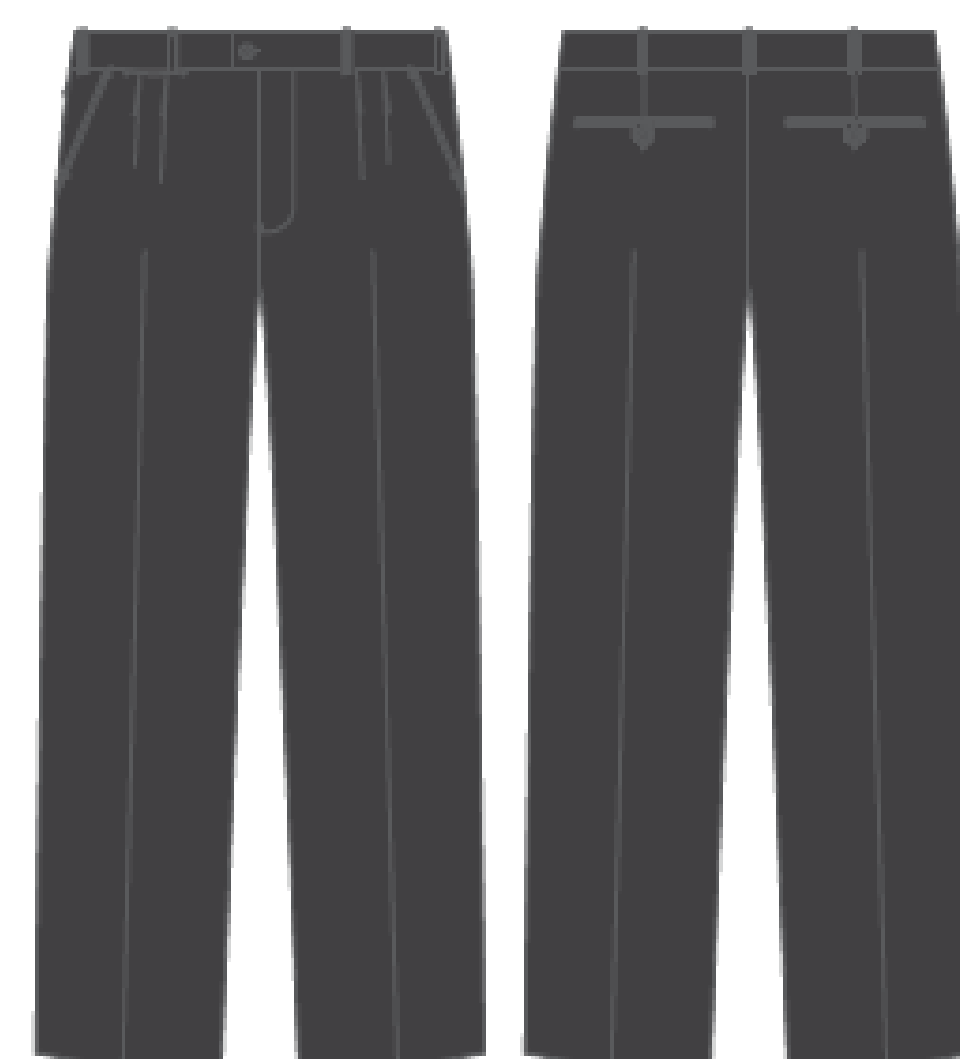
COLLEGE VEST



COLLEGE JUMPER



LONG SLEEVE SHIRT
(MALE CUT)



PANTS
(MALE CUT)



COLLEGE SHORTS
(MALE CUT)



OPAQUE TIGHTS



BLACK SOCKS



TIE



COLLEGE BLAZER



ST MARYS COLLEGE

SPORTS UNIFORM

FULL YEAR



CHECKLIST:

- COLLEGE SOFT SHELL JACKET
- COLLEGE SHORT/LONG SLEEVE POLO
- COLLEGE SHORTS
- COLLEGE TRACKPANTS

- COLLEGE RUGBY JUMPER
- COLLEGE CAP/BUCKET HAT
- SHORT COLLEGE BLACK SOCK

UNIFORM:



POLO



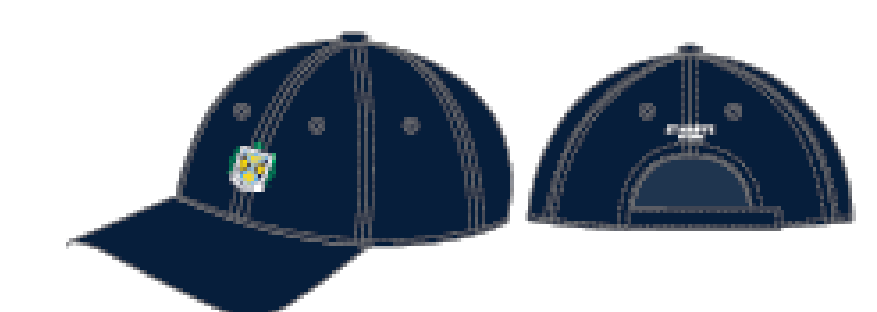
RUGBY JERSEY



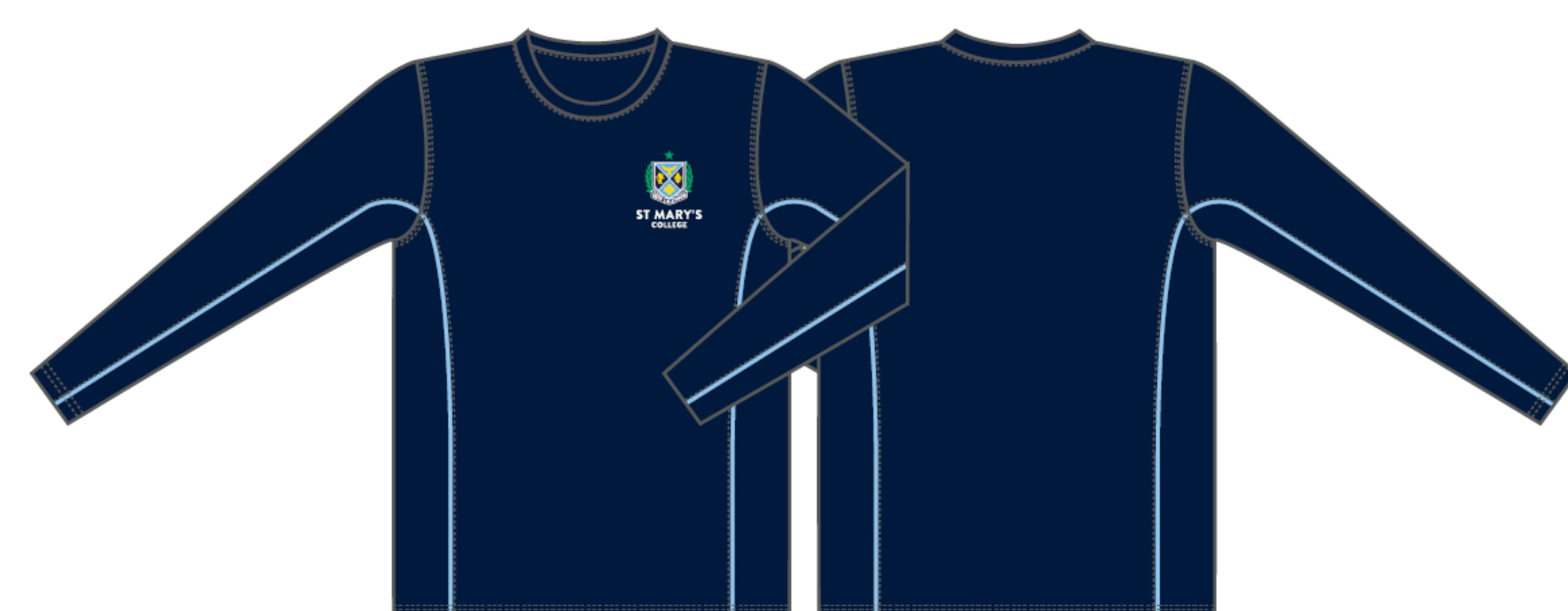
SPORT SHORTS



SPORT TRACK PANTS



SPORTS CAP



LONG SLEEVE POLO



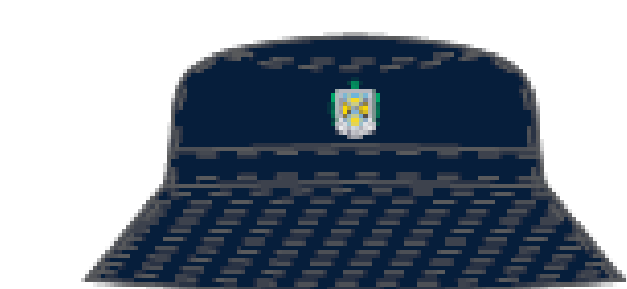
SOFT SHELL JACKET



SPORT SHORTS



BLACK SOCKS



BUCKET HAT

ST MARYS COLLEGE UNIFORM GUIDELINES

General Appearance:

- The Summer uniform must be worn in Terms 1 and 4.
- The Winter uniform must be worn in Terms 2 and 3.
- Summer, Winter, and Sports Uniform are not to be interchanged.
- The PE uniform may only be worn if the student is participating in PE (practical lesson) on the day or is involved in inter-school sport or as directed for an excursion.
- The College blazer is to be worn to and from school, unless indicated by the College.
- The College blazer is to be worn by students at all formal College occasions, e.g. masses and assemblies.
- Long-sleeved shirts must be worn tucked in.
- Long pants should touch the shoe and not be rolled or cuffed.
- Winter skirts and summer dresses should extend close to the knee.
- Winter skirts are to be worn with plain black opaque tights or visible short black socks.
- Summer dresses are to be worn with visible short black socks.
- Shorts are to be worn with visible short black socks.
- School shoes must be plain black, polished leather, hard-soled shoes (no runners, no brands).
- Only College bags are permitted.
- Hats should be worn for sun safety and only College hats are permitted.
- Top button must be fastened when wearing the College tie.
- Undergarments including base layers, should not be visible (under summer/winter uniform or PE uniform).
- College jumper only (no hoodies or brands may be worn)

Personal Presentation:

The wearing of the school uniform has been a unifying feature of our school for generations. All students are expected to wear the College uniform at school and while travelling to and from school. The College has a distinctive uniform and, when worn well, it signifies belonging to the school community.

- Uniform is to be always worn neatly and correctly by students, and in a manner that is respectful of themselves and the high standards of the College.
- Hair must be clean, neat and tidy with no extreme styles. Hair should be of one natural colour. Hair which falls below the collar must be tied back.
- Jewellery must be no more than two small gold/silver studs or small sleepers in each ear and one religious necklace.
- Make-up, nails and eyelashes should be natural in appearance.
- Visible tattoos are not permitted.



ST MARY'S COLLEGE

ST MARY'S COLLEGE

ST MARY'S COLLEGE



ST MARY'S
COLLEGE

www.stmaryscollege.vic.edu.au